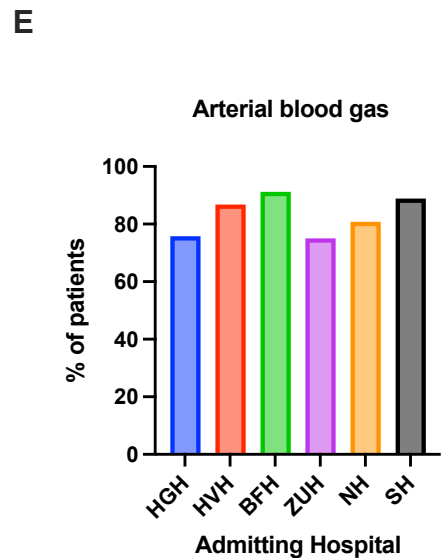
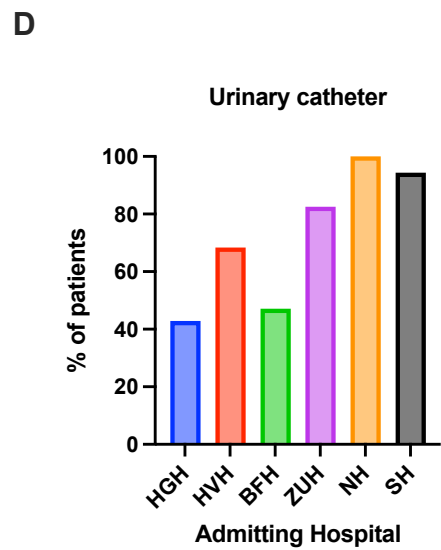
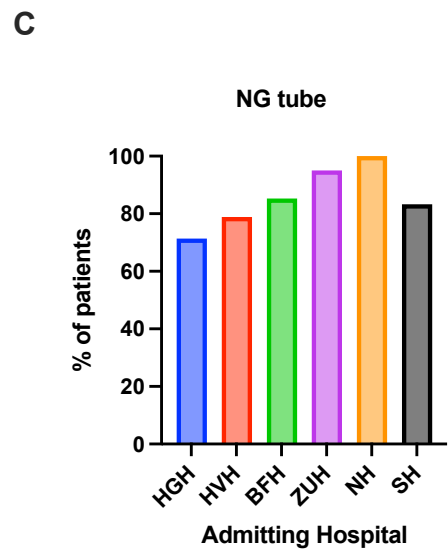
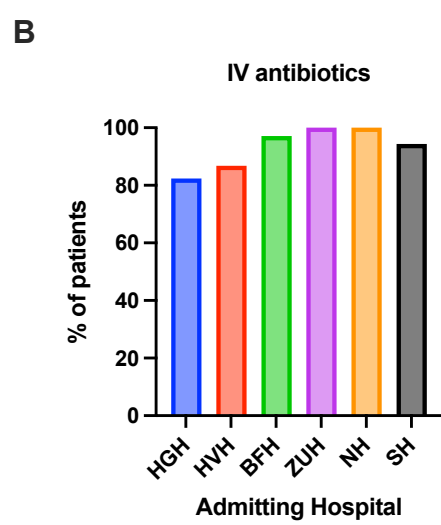
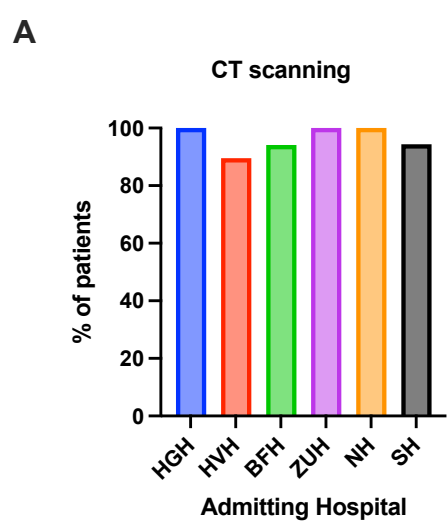


**Supplementary Figure 1. Clinicopathological demographics of patients admitted with small bowel obstruction.** (A) Age. (B) American Society of Anesthesiologists grade. (C) Performance status. (D) Charlson Comorbidity Index. (E) Previous abdominal operations. (F) Previous admissions due to small bowel obstruction.



**Supplementary Figure 2. Adherence to specific components of multidisciplinary peri-operative protocols in patients with small bowel obstruction. (A) CT scanning. (B) Broad spectrum intravenous antibiotics. (C) Nasogastric tube insertion. (D) Urinary catheter insertion. (E) Arterial blood gas.**