

Figure S1: The annual incidence of moderate to severe TBI and polytrauma TBI admitted by trauma team activation to AUH-TC per 100,000 inhabitants from 2014 to 2021. CI, confidence interval.

TBI, traumatic brain injury.

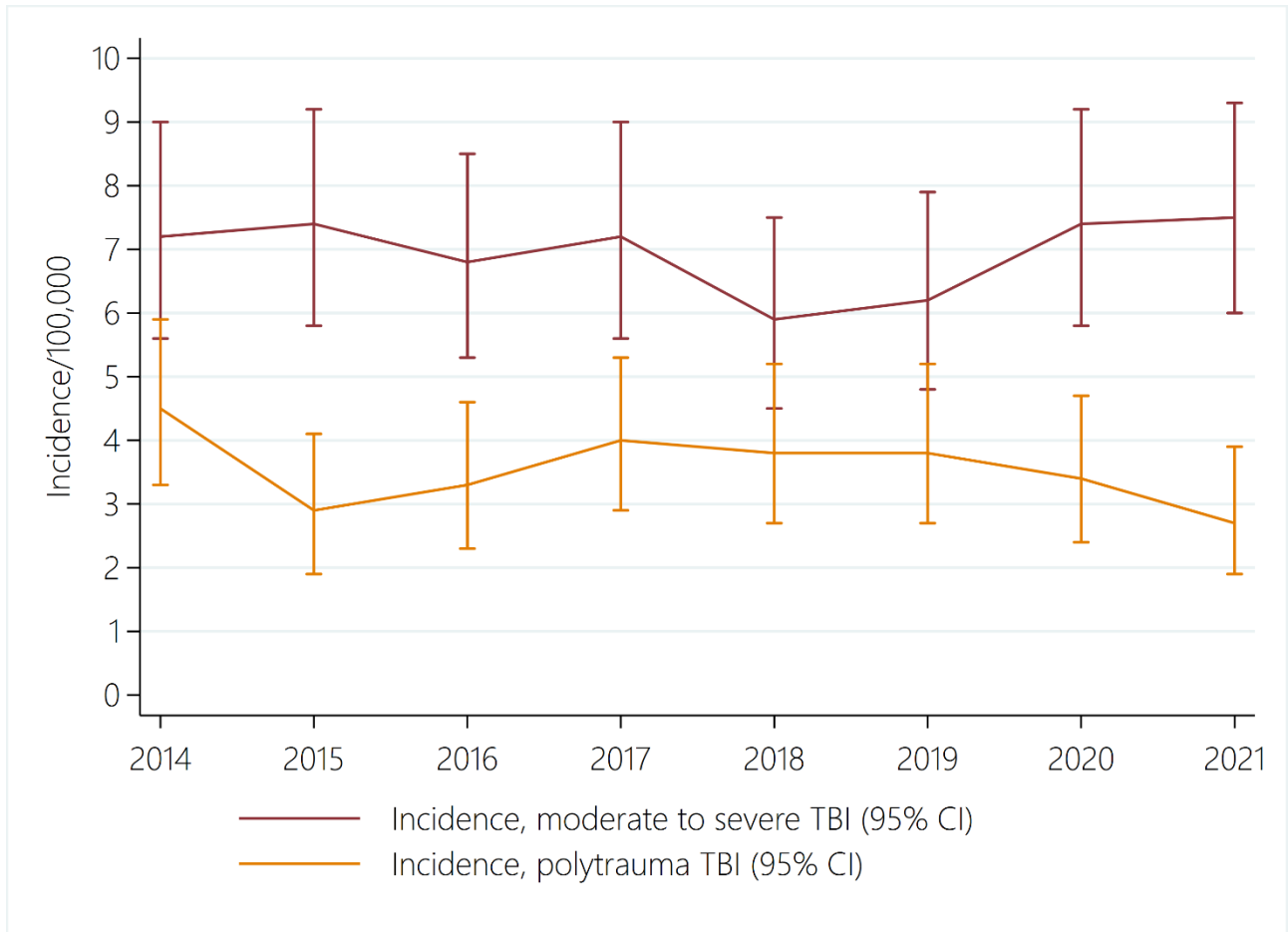


Table S1: The trauma team is activated if a patients score $2 \geq$ points based on the clinical characteristics, mechanism of injury, age or comorbidity.

	0	1	2	Point
Consciousness	Responsive, Glasgow Coma Scale 15.	Partial response, Glasgow Coma Scale 13-14. Brief unconscious.	Unresponsive Glasgow Coma Scale < 13.	
Breathing	Normal.	Dyspnea.	Saturation < 90. Frequency <10 or >30.	
Circulation	Systolic BP > 90 mmHg.	Cold, sweating, pulse > 100.	Systolic Blood pressure < 90 mmHg.	
Chest	No tenderness/light tenderness.	Persistent pain, +/- touch.	Open lesion.	
Stomach	No tenderness/light tenderness.	Persistent pain.	Open lesion.	
Neck/spine	No tenderness/light tenderness.	Constant or persistent pain or pain. Tingling in arms or legs.	Paralysis, fracture, or suspected spine fractures.	
Mechanism of injury	Low energy.	Pedestrian/bicycle or high energy.	Burns (2 nd and 3 rd degree): Children > 10% Adults > 15% Penetrating injury to head/neck.	
Increased risk: Age and/or comorbidity		< 6 years > 75 years Comorbidity		

Table S2: Mechanism of injury in patients admitted with traumatic brain injury from 2014 to 2021,

n (%).

	2014, n (%)	2015, n (%)	2016, n (%)	2017, n (%)	2018, n (%)	2019, n (%)	2020, n (%)	2021, n (%)
Road traffic collision	50 (23.9)	43 (27.0)	42 (25.0)	36 (18.0)	41 (21.5)	38 (20.2)	48 (24.9)	56 (23.8)
Motorcycle	14 (6.7)	5 (3.1)	7 (4.2)	7 (3.5)	8 (4.2)	11 (5.9)	2 (1.0)	4 (1.7)
Scooter	8 (3.8)	12 (7.6)	4 (2.4)	9 (4.5)	6 (3.1)	8 (4.3)	9 (4.7)	4 (1.7)
Bicycle	44 (21.1)	25 (15.7)	29 (17.3)	42 (21.0)	41 (21.5)	43 (22.9)	31 (16.1)	36 (15.3)
Fall	58 (27.8)	38 (23.9)	49 (29.2)	70 (35.0)	62 (32.5)	61 (32.5)	76 (39.4)	85 (36.2)
Horse	5 (2.4)	2 (1.3)	4 (2.4)	6 (3.0)	4 (2.1)	4 (2.1)	2 (1.0)	11 (4.7)
Pedestrian	8 (3.8)	6 (3.8)	12 (7.1)	10 (5.0)	11 (5.8)	6 (3.2)	5 (2.6)	9 (3.8)
Violence	4 (1.9)	4 (2.5)	7 (4.2)	6 (3.0)	4 (2.1)	3 (1.6)	4 (2.1)	7 (3.0)
Stabbing	1 (0.5)	5 (3.1)	2 (1.2)	1 (0.5)	2 (1.1)	3 (1.6)	1 (0.5)	0 (0.0)
Gunshot	1 (0.5)	1 (0.6)	0 (0.0)	0 (0.0)	1 (0.5)	3 (1.6)	0 (0.0)	0 (0.0)
Self-harm	5 (2.4)	7 (4.4)	4 (2.4)	4 (2.0)	3 (1.6)	2 (1.1)	2 (1.0)	3 (1.3)
Other mechanism ^a	11 (5.3)	11 (6.9)	8 (4.8)	9 (4.5)	8 (4.2)	6 (3.2)	13 (6.7)	20 (8.5)
^a Other mechanism of injuries includes crushing, struck by object or sports injuries.								